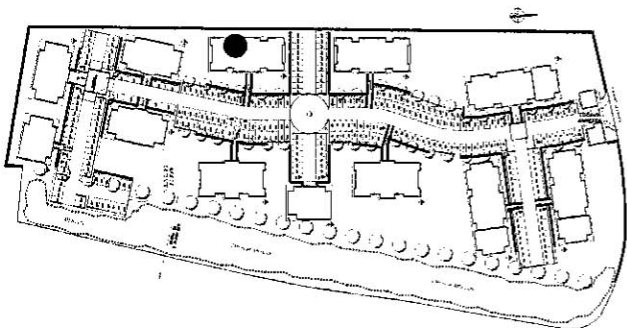
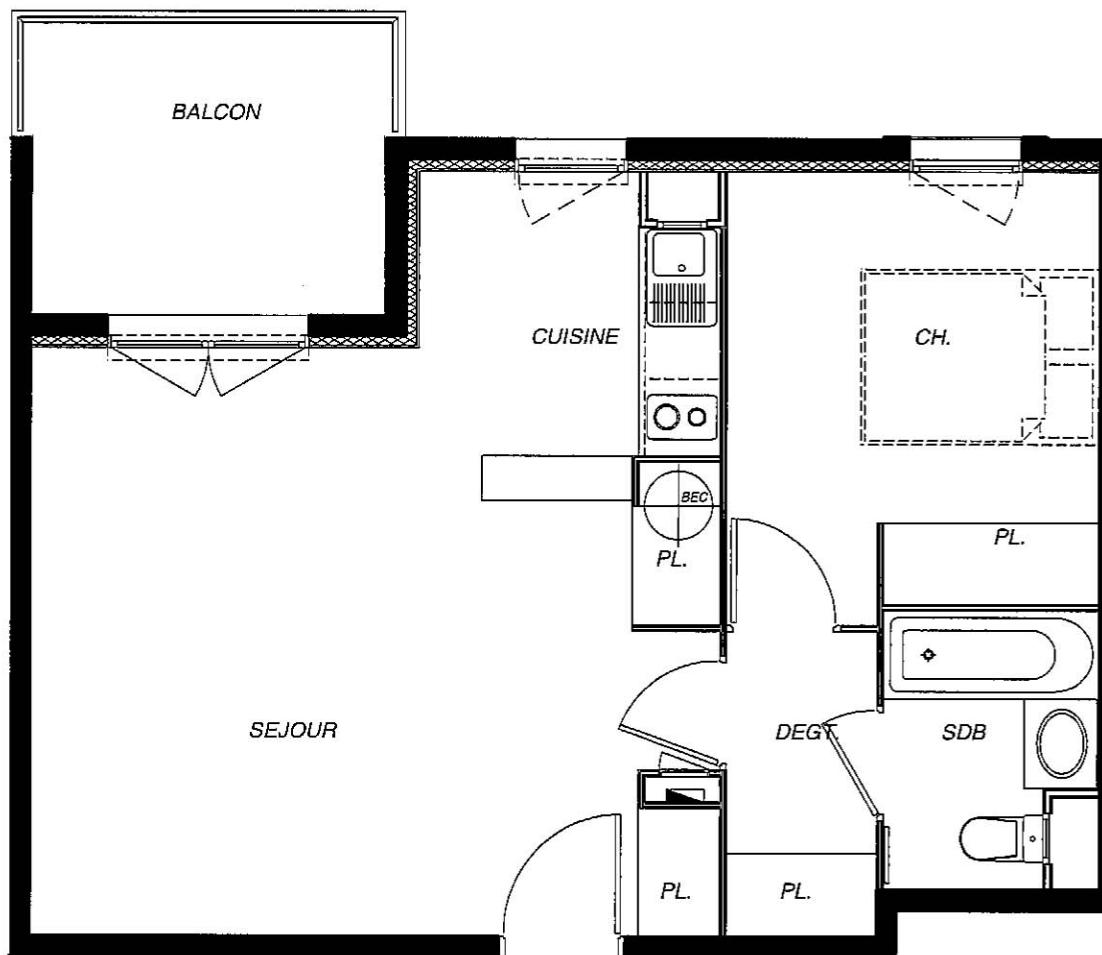


# Le Moulin du Roy



BATIMENT J	
APPARTEMENT - T2C	N°104
REZ DE JARDIN	
SURFACES HABITABLES (m <sup>2</sup> )	
SEJOUR + PL + PL BEC	22,56
CUISINE	5,75
DEGT + PL	2,83
SDB / WC	3,45
CHAMBRE + PL	10,33
<b>TOTAL</b>	<b>44,92</b>
BALCON	7,15



608



851