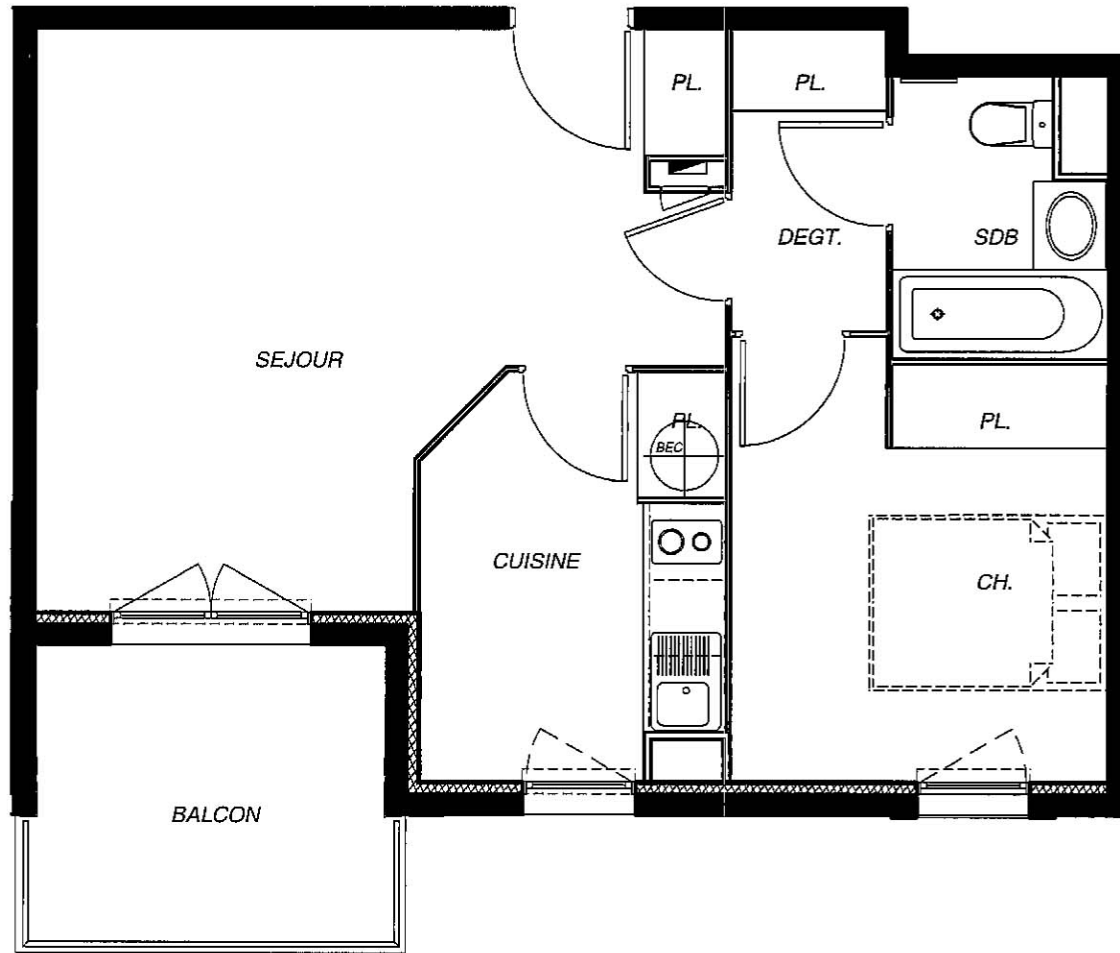
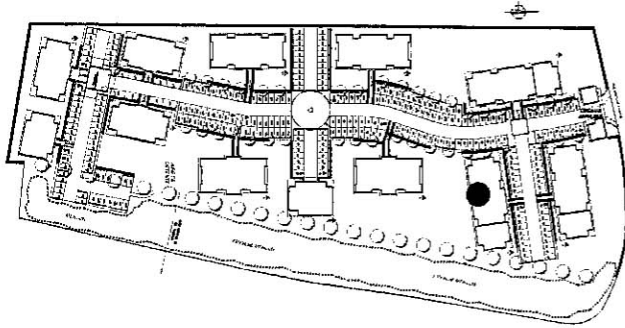


# Le Moulin du Roy



599

854

BATIMENT B	
APPARTEMENT - T2C	N°29
1er ETAGE	
SURFACES HABITABLES (m²)	
SEJOUR + PL	20,66
CUISINE + PL BEC	7,31
DEGT + PL	2,90
SDB / WC	3,51
CHAMBRE + PL	10,08
<b>TOTAL</b>	<b>44,46</b>
BALCON	7,19

