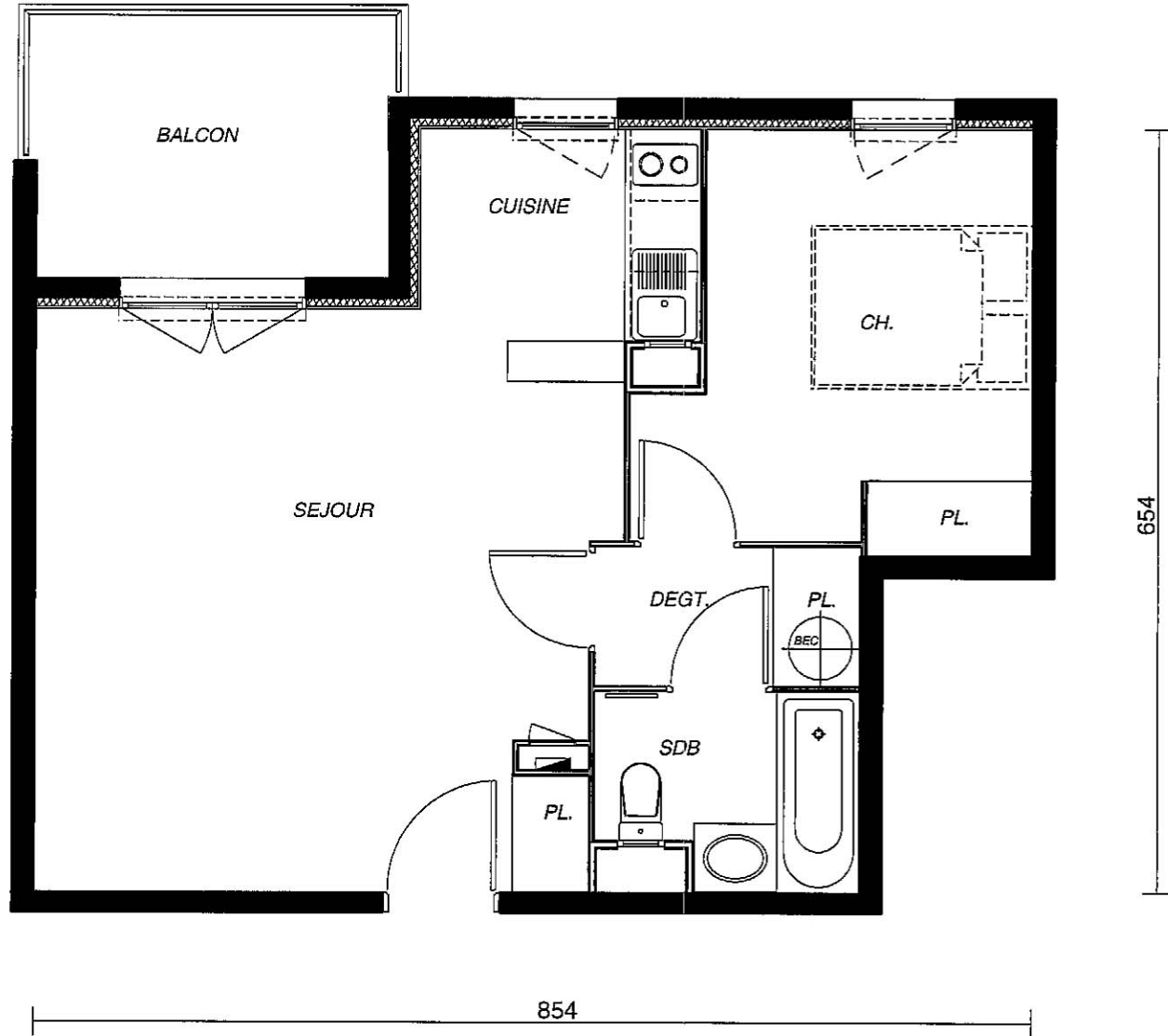
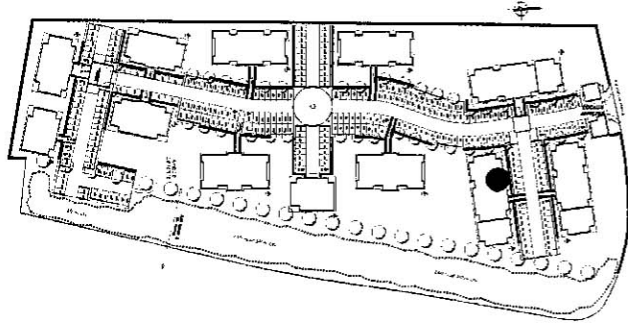


# Le Moulin du Roy



BATIMENT B	
APPARTEMENT - T2C	N°24
REZ DE JARDIN	
SURFACES HABITABLES	(m <sup>2</sup> )
SEJOUR + PL	22,93
CUISINE	4,98
DEGT + PL BEC	2,67
SDB / WC	3,53
CHAMBRE + PL	10,74
<b>TOTAL</b>	<b>44,85</b>
BALCON	7,44

