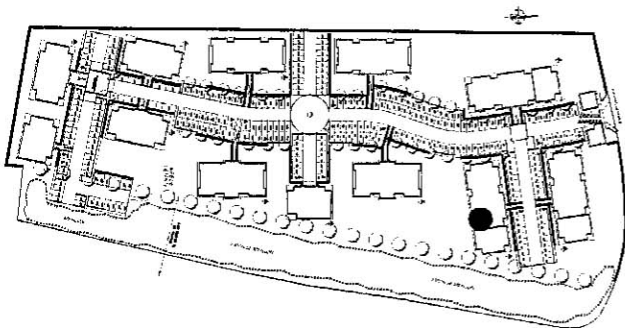
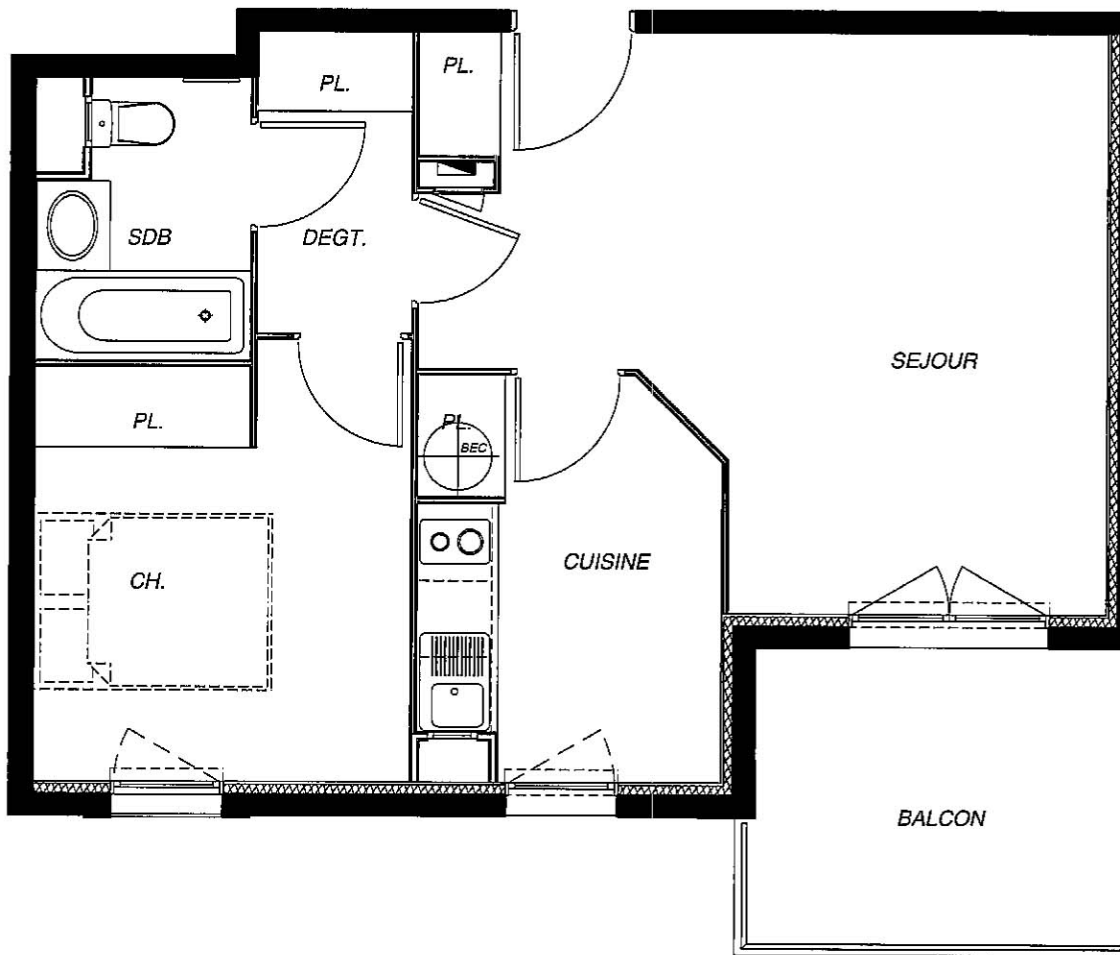


Le Moulin du Roy



BATIMENT B	
APPARTEMENT - T2C	N°20
REZ DE JARDIN	
SURFACES HABITABLES (m ²)	
SEJOUR + PL	20,66
CUISINE + PL BEC	7,31
DEGT + PL	2,90
SDB / WC	3,51
CHAMBRE + PL	10,08
TOTAL	44,46
BALCON	7,66



599

854

