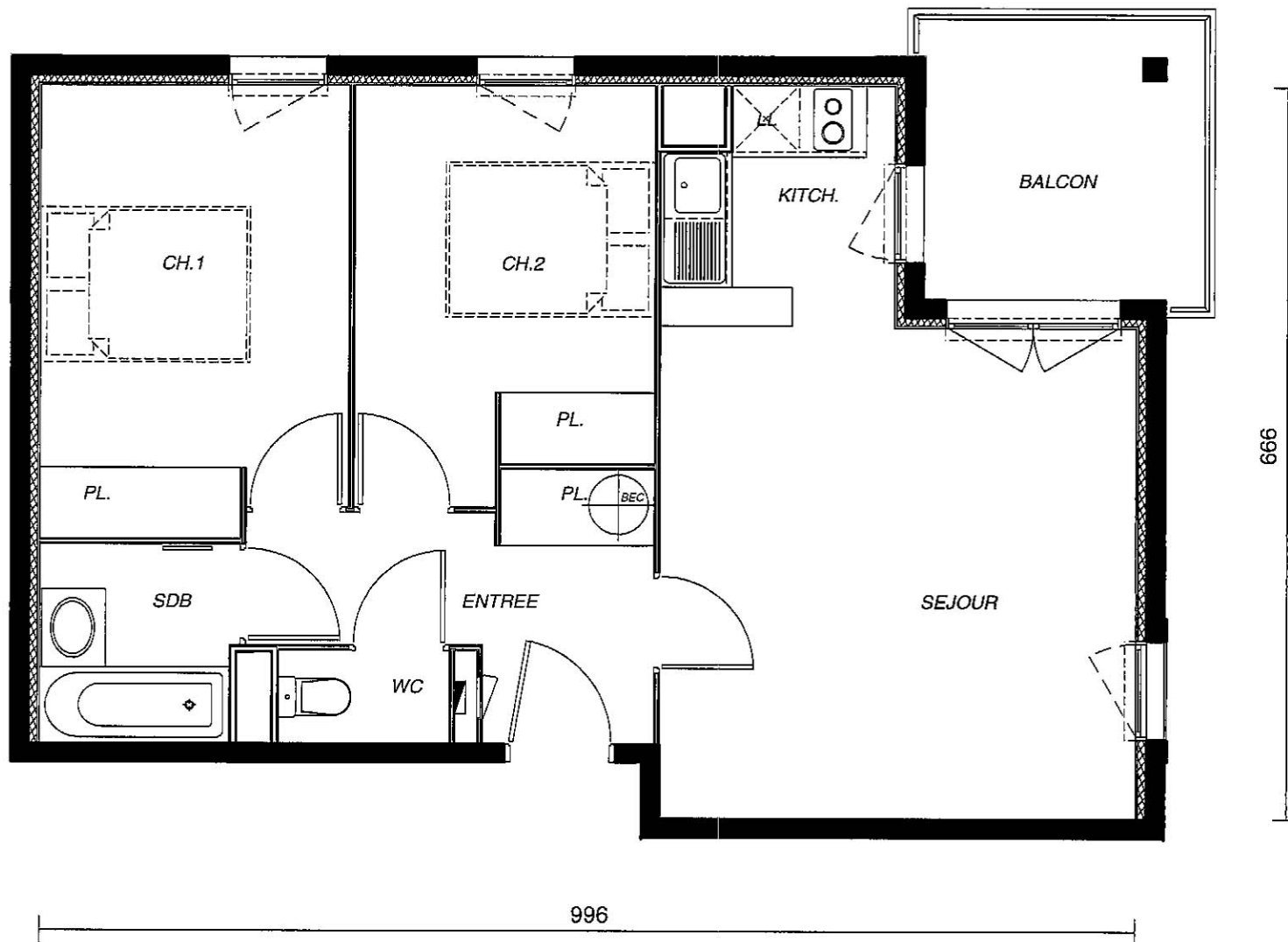
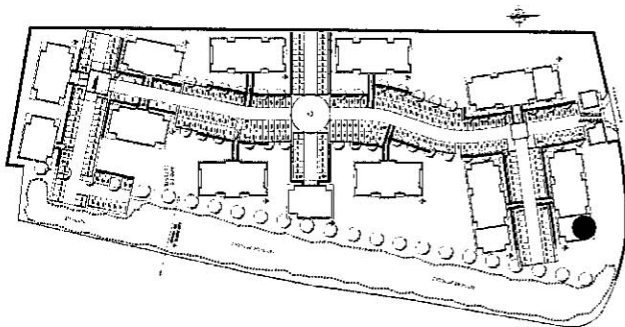


Le Moulin du Roy



BATIMENT A	
APPARTEMENT - T3K	N°14
1er ETAGE	
SURFACES HABITABLES (m ²)	
ENTREE + PL BEC	6,33
WC	1,32
SDB	3,20
SEJOUR	19,35
KITCHENETTE	4,25
CHAMBRE 1 + PL	11,17
CHAMBRE 2 + PL	9,80
TOTAL	55,42
BALCON	7,12

